

Electricity Network Pricing Schedule

Effective 1 April 2021

Contents

Table of figures.....	3
1 Glossary	4
3 Network Pricing Schedule	6
3.1 Purpose	6
3.2 Network lines charges (unit prices).....	6
3.3 Pricing framework	6
3.4 General terms of connection.....	7
4 Electricity network lines charge pricing	8
4.1 Times used for pricing	8
4.2 Extent of charges.....	8
4.3 Transmission costs	8
4.4 Pass-through and other recoverable costs	8
4.5 Specifying the Electricity Distribution Network.....	9
4.6 Selecting of Consumer and Load Groups.....	9
4.7 Time periods	11
5 Residential electricity pricing.....	12
5.1 Residential price categories.....	12
5.2 Description of consumption category options	13
5.3 Residential pricing eligibility criteria	15
6 General low voltage and general transformer connections (non-residential).....	21
6.1 Consumer Group definitions	21
6.2 Variable charges.....	22
6.3 Fixed charges	22
6.4 Capacity charges	22
6.5 Demand charges	22
6.6 Power factor charges.....	22
7 Un-metered electricity line charges	23
7.1 Consumer Group definitions	23
8 Small scale distributed generation charges	23
9 Non-standard contracts	24
10 Determining consumption	24
10.1 Embedded generation	24
10.2 Electricity network loss factors.....	24
10.3 Provision of consumption information.....	26
11 Other charges	27
11.1 Description of charges	27
Appendix 1: Electricity line charge schedule	29
Appendix 2: Data file format and type requirements	31
Appendix 3: Service areas and service levels.....	37



Table of figures

Figure 1 – Grid exit point locations	9
Figure 2 – Consumer Group definitions and associated Load Groups	9
Figure 3 – Pricing schedule time periods	11
Figure 4 – Residential price categories	12
Figure 5 – Consumption categories	14
Figure 6 - Time of Use prices and the 'opt out' Time of Use prices	17
Figure 7 – TOU consumption details.....	18
Figure 8 – Residential Low User and Residential Standard User consumption details	19
Figure 9 – EVB consumption details	20
Figure 10 – Low voltage, non-residential pricing codes	21
Figure 11 – Transformer connection, non-residential pricing codes	21
Figure 12 – Un-metered pricing codes	23
Figure 13 – Un-metered streetlight consumption night hour multiple	24
Figure 14 – Electricity network loss factors	25
Figure 15 – Wellington loss factor look up codes.....	25
Figure 16 – Other charges	27



1 Glossary

Abbreviation	Definition or description
ACOT	Avoided cost of transmission – an amount payable to large distributed generators within Wellington Electricity’s network in recognition that these generators may cause WELL to avoid Transpower charges
Capacity	The maximum amount of energy that a part of the network is able to carry at any point in time
Commerce Commission	New Zealand Commerce Commission (NZCC)
Consumer or End Consumer	A person, residential or business, that uses electricity or acquires electricity lines services
Consumer Group	The category of consumer used by the Electricity Distribution Business (EDB) for the purpose of setting prices
Controlled Load	An amount of electrical load which a consumer makes available to the distributor’s load control system to turn off during periods of network congestion or to assist in restoring supply
Demand	Electricity use at a point in time
Distributed Generator	Any person who owns or operates equipment that is connected to Wellington Electricity Lines Limited’s distribution network, including through a consumer installation, which is capable of injecting electricity into the network
Distribution Network	A distribution network is the network of equipment that carries electricity from the high voltage transmission grid to industrial, commercial and domestic users
DPP	The Commerce Commission sets a price-quality path for each regulated lines company - a price path is the maximum total revenue a lines company can recover from its consumers and the quality path is the minimum level of quality of service that it must provide. A default price path (DPP) is a low cost, standard method of calculating the price-quality path
DPP Determination 2020	WELL’s current price-quality path, Decision No [2020] NZCC 25, Electricity Distribution Services Default Price-Quality Path (Wellington Electricity transition) Amendments Determination 2020
EDB	An Electricity Distribution Business (EDB) is an entity that owns and operates an electricity distribution network to provide electricity distribution services



Abbreviation	Definition or description
Electricity Authority	The Electricity Authority. The Electricity Authority is an independent Crown entity responsible for the efficient operation of the New Zealand electricity market. It is the electricity market regulator
Electricity distribution Services	Electricity distribution services are the conveyance of electricity on lines from the transmission GXP to consumers ICPs
EV	Electric Vehicle
GXP	A point of supply to Wellington Electricity Lines Limited's distribution network from Transpower's national transmission grid
HV	High Voltage – equipment or supplies at voltages of 11kV, 22kV or 33kV
ICP	An Installation Control Point (ICP) is a physical point of connection on a local network or an embedded network that the distributor nominates as the point at which a Traders will be deemed to supply electricity to a consumer
LFC Regulations	Electricity (Low Fixed Charge Tariff Option for Domestic Consumers) Regulation 2004
Lines Charges	The total delivery price for both distribution and transmission services
Load Group	Load Group is a tariff category as described in the Distributor's line charges and charging methodology from time to time
LV	Low Voltage – equipment or supply at a voltage of 220V single phase or 415V three phase
Network	The electricity distribution network owned by Wellington Electricity Lines Limited for the conveyance of electricity. Network assets include substations, lines, poles, transformers, circuit breakers, switchgear, cabling etc.
Point of Connection	A point at which a consumer's fittings interconnect with the Network as described by diagrams as used from time to time by Wellington Electricity Lines Limited

3 Network Pricing Schedule

3.1 Purpose

The purpose of this document (the Network Pricing Schedule) is to provide Traders with Wellington Electricity Lines Limited (**WELL's**) network lines charges and the terms and conditions of their operation. Specifically, the Network Pricing Schedule provides:

- a) Pricing Structure;
- b) Pricing Categories, and the eligibility criteria for each Price Category;
- c) Price Options (if any); and
- d) Unit Prices.

This document is the Network Pricing Schedule referred to in Schedule 7 of WELL's Default Distribution Agreement (DDA).

3.2 Network lines charges (unit prices)

The network lines charges applicable to the WELL network for the pricing year starting 1 April 2021 are included in Appendix 1. Appendix 2 provides further information on the pricing categories including units of measurement, register content codes, hours of availability and the file types that billing information must be submitted in.

3.3 Pricing framework

Under Part 4 of the Commerce Act 1986, the Commerce Commission determines the cost of operating the network for WELL and the quality of services WELL must provide. WELL recovers the cost of owning and operating the network through its network lines charges.

The revenue to be collected from WELL's network lines charges are set in accordance with the Default Price-Quality Path Determination 2020 (**DPP Determination 2020**) for Wellington Electricity, as determined by the Commerce Commission. The DPP Determination 2020 regulates two components of WELL's prices: the distribution price component and the pass-through price component. The distribution price component recovers WELL's costs of operating the electricity distribution network and associated electricity distribution services. The pass-through price component recovers costs that are largely outside WELL's control. These include transmission costs, council rates, levies and other recoverable costs.

WELL's Pricing Methodology outlines how costs are allocated to and recovered from the consumer groups connected to and receiving line function services from the Wellington network. The Pricing Methodology can be found at www.welectricity.co.nz/disclosures/pricing/.

The following pricing related material applicable for the 2021/22 year is available on WELL's website:¹

Document	Purpose
Customer Contributions Policy ²	<p>WELL collects revenue from its:</p> <ul style="list-style-type: none"> (a) on-going tariffs or from (b) customer contributions toward new connections. <p>The Customer Contribution Policy is a regulatory disclosure which sets out how WELL calculates a customer's contribution towards a new connection.</p>
Disclosure of Prices	The Disclosure of Prices provides stakeholders (consumers, Traders and regulators) with prices and any price changes for the upcoming regulatory year. The Disclosure of Prices is a regulatory Information Disclosure requirement.
Line Charge Notice	The Line Charge Notice provides WELL's tariffs for the upcoming regulatory year. WELL publishes the Line Charge Notice in the Dominion Post newspaper and on WELL's own website.
Pricing Methodology	WELL's Pricing Methodology outlines how costs are allocated to and recovered from the consumer groups connected to and received line function services from the Wellington network.
Network Pricing Schedule	<p>The Network Pricing Schedule provides Traders with WELL's network lines charges and the terms and conditions of their application. Specifically, the Network Pricing Schedule provides:</p> <ul style="list-style-type: none"> (a) Pricing Structure; (b) Pricing Categories, and the eligibility criteria for each Price Category; (c) Price Options (if any); and (d) Unit Prices.
Pricing Roadmap	The Pricing Roadmap updates stakeholders about WELL's plans for future changes to pricing structures, expected timeframes and progress updates.

3.4 General terms of connection

The terms and conditions of connecting to WELL's network are provided in a commercial agreement between either (i) WELL and Traders, or (ii) WELL and the End-Consumer. WELL has two different agreements with Traders:

- a) WELL has a Use of Network Agreement (**UNA**) with Traders which provides the terms and conditions of connecting to the Wellington Electricity Distribution network.
- b) The Electricity Authority has released a new agreement that governs the responsibilities between lines companies and Traders. In line with the requirements of the Electricity Code, WELL has finalised its Default Distributors Agreement (DDA) using Traders feedback. WELL offered the new agreement to traders on 17th December 2020.

¹ Available at: www.welectricity.co.nz/disclosures/pricing

² Available at: www.welectricity.co.nz/disclosures/customer-contributions/



4 Electricity network lines charge pricing

This Network Pricing Schedules provides WELL's pricing terms and conditions.

4.1 Times used for pricing

Times stated in this module are New Zealand Daylight Time unless otherwise specified.

4.2 Extent of charges

All charges exclude:

- a) The provision of Metering Equipment or Load Management equipment which is located at the Point of Connection to the Electricity Network;
- b) The cost of the End-Consumer Fittings; and
- c) Goods and Services Tax (GST).

4.3 Transmission costs

Transpower, the National Grid owner/operator, charges its costs for its high voltage transmission system to distribution companies like WELL.

- a) All charges exclude loss constraint excess payments (line rental rebates) and ancillary service charges. WELL will distribute (or invoice as the case may be) these amounts to Traders. The amounts will be distributed or charged to Traders in proportion to their share of the kWh volumes reconciled each month across the Network. WELL may charge a monthly administration fee for this function. The administration fee will be allocated to Traders in proportion to their share of the kWh volumes reconciled each month across the Network.
- b) Transmission costs are passed onto End-Consumers through WELL's Network Lines Charges.

Transmission costs also come in the form of Avoided Cost of Transmission (ACOT) payments which WELL makes to distributed generators with an injection capacity of 200kVA or greater on WELL's network, in circumstances where payments to Transpower have been avoided or reduced. WELL passes these charges on to consumers at cost.

4.4 Pass-through and other recoverable costs

These costs are made up of council rates, regulatory levies and other recoverable costs:

4.4.1 Council rates

Local Council rates levied on Wellington Electricity are included in our prices to End-Consumers and are passed through at cost.

4.4.2 Regulatory levies

Levies from the Commerce Commission, Electricity Authority and Utilities Disputes Ltd are included in our prices to End-Consumers and are passed through at cost.

4.4.3 Fire and Emergency levies

Fire and Emergency Management New Zealand (FENZ) levies are included in our prices to End-Consumers and are passed through at cost

4.4.4 Other recoverable costs

Other recoverable costs include items such as regulatory wash-ups and incentives which are allowed to be recovered or passed back through prices under the DPP.

4.5 Specifying the Electricity Distribution Network

The Transmission Grid Exit Point (GXP) determines the location of the Electricity Distribution Network that End-Consumers are supplied from. GXP means the point on the electricity transmission system at which the distribution network is connected to the Transmission grid. The GXPs on the Wellington Network are shown in Figure 1 below.

Figure 1 – Grid exit point locations

Network GXP Locations	
Haywards	Takapu Rd
Melling	Pauatahanui
Gracefield	Wilton
Upper Hutt	Central Park
Kaiwharawhara	

Appendix 3 defines the service areas of the Wellington distribution network. Service reliability is defined and reliability targets set by the Commerce Commission as part of the price/quality regulation for the Wellington Network. Service reliability targets are reported in WELL's annual Compliance Statements and WELL's Asset Management Plan which can be found on our website³.

4.6 Selecting of Consumer and Load Groups

WELL has different tariffs for different types of consumers. WELL has residential, non-residential, distributed generation, un-metered and non-standard consumer groups. Each Consumer Group has a number of available Load Groups – a Load Group is an End-Consumer tariff category. Figure 2 below provides the definition for each Consumer Group and the associated Load Groups.

Figure 2 – Consumer Group definitions and associated Load Groups

Consumer Group	Definition	Load Groups
Residential	Residential Consumer Group are all Residential End-Consumers in a private dwelling not normally used for any business activity.	<ul style="list-style-type: none"> Residential Low User (RLU) Residential Standard User (RSU) Residential Low User Electric Vehicle and Battery Storage (RLUEVB); Residential Standard User Electric

³ Available at: www.welectricity.co.nz/disclosures/

Consumer Group	Definition	Load Groups
		Vehicle and Battery Storage (RSUEVB); <ul style="list-style-type: none"> Residential Low User Time of Use (RLUTOU); Residential Standard User Time of Use (RSUTOU).
General low voltage connections	The General Low Voltage Connection Group is connected to the LV network with a connection capacity of up to 1500kVA, where the premises are a non-residential site used for business activity.	<ul style="list-style-type: none"> General low voltage <=15kVA (GLV15) General low voltage >15kVA and <=69kVA (GLV69) General low voltage >69kVA and <=138kVA (GLV138) General low voltage >138kVA and <=300kVA (GLV300) General low voltage >300kVA and <=1500kVA (GLV1500)
General transformer connection	The General Transformer Connection Group includes consumers who receive supply from a transformer, owned by WELL and dedicated to supplying a single consumer, where the premises is a non-residential site used for business activity.	<ul style="list-style-type: none"> General transformer <=15kVA (GTX15) General transformer >15kVA and <=69kVA (GTX69) General transformer >69kVA and <=138kVA (GTX138) General transformer >138kVA and <=300kVA (GTX300) General transformer >300kVA and <=1500kVA (GTX1500) General transformer >1500kVA (GTX1501)
Distributed generation	Distributed generators inject energy into WELL's network. Distributed generators may be on either standard or non-standard contracts depending on the circumstances.	<ul style="list-style-type: none"> DGEN
Un-metered	The Un-metered Consumer Group includes consumers who do not have any metering because the cost of metering is prohibitive relative to their consumption. This includes streetlights, bus shelters, traffic lights etc.	<ul style="list-style-type: none"> Non-street lighting (G001) Street lighting (G002)
Non-standard	The non-standard contracts group is made up of consumers who have atypical connection characteristics.	<ul style="list-style-type: none"> Direct agreement

Other Load Groups considerations include:

- a) The Load Group for an End-Consumer will be set by WELL based on the criteria set out in this Network Pricing Schedule.
- b) There may be optional Load Groups some End-Consumers. A Trader may requested an optional Load Group in accordance with the requirements and criteria provided in this Network Pricing Schedule.
- c) Where an End-Consumer requests a new connection or an upgrade to their existing connection that requires expenditure to connect to the network or to increase the capacity or security of a connection, WELL may apply non-standard charges other than those outlined in Appendix 1. Refer to Wellington Electricity's Customer Contributions Policy at www.welectricity.co.nz/disclosures/customer-contributions/ for this pricing information. The Customer Contribution Policy sets out how WELL calculates a customer's contribution towards a new connection.

4.7 Time periods

The time periods used in the pricing schedules are defined in Figure 3.

Figure 3 – Pricing schedule time periods

Period	Price component code	Measurement period
Night boost	RLU-NITE RSU-NITE RLUTOU-NITE RSUTOU-NITE	11:00pm to 7:00am and 1:00pm to 3:00pm (two hour boost period)
Peak	RLUEVB-PEAK RSUEVB-PEAK RLUTOU-P-UC RLUTOU-P-AI RSUTOU-P-UC RSUTOU-P-AI	Weekdays only including public holidays 7:00am to 11:00am and 5:00pm to 9:00pm
Off-peak	RLUEVB-OFFPEAK RSUEVB-OFFPEAK RLUTOU-OP-UC RLUTOU-OP-AI RSUTOU-OP-UC RSUTOU-OP-AI	Weekdays 11:00am to 5:00pm and 9:00pm to 7:00am Weekends all times
On-peak demand charge	GTX1501-DOPC	Weekdays only including public holidays 7:30am to 9:30am and 5:30pm to 7:30pm
Power factor charge	GTX1501-PWRF	Weekdays ⁴ 7:00am to 8:00pm

⁴ Power factor charge is applicable for power factor <0.95 from 7:00am - 8:00pm on weekdays where the kVAr charge amount represents twice the largest difference between the recorded kVArh and one third of the recorded kWh in any one half-hour period

5 Residential electricity pricing

This section applies to all Residential End-Consumers in a private dwelling not normally used for any business activity. The residential Consumer Groups are consistent with the definition of “Domestic consumer” in the Low Fixed Charge Regulations, where the primary use of the point of connection is a home not normally used for any business activity.

Consumers in these groups almost exclusively connected to the LV Network, place similar capacity demands on the network, and can use night boost⁵ and controlled⁶ tariffs, provided they have the required metering, dedicated interruptible load and meet other eligibility criteria.

5.1 Residential price categories

WELL has three types of residential prices – (1) ToU prices that signal peak congestion periods, (2) an alternative price for residential consumers who do not have meters that can provide the data to calculate ToU prices and (3) ToU prices for EV and battery customers. Each of the three types of prices has a low user and standard user variant, resulting in six residential price category’s in total. The residential price categories are provided in Figure 4.

Figure 4 – Residential price categories

Price category description	Price category code	Purpose
Residential Low User Time of Use	RLUTOU	ToU prices signal peak and off-peak periods of network demand. These are our standard residential consumer prices that most residential consumers will be on. Lower off-peak prices encourage consumers to use energy away from the more expensive peak periods. Customers who move their energy use away from peak periods will benefit from lower prices.
Residential Standard User Time of Use	RSUTOU	
Residential Low User	RLU	Alternative prices for consumers that do not have meters that can provide the half hour data needed to calculate ToU prices. We estimate that about 10% of consumers will need these price categories.
Residential Standard User	RSU	
Residential Low User Electric Vehicle & Battery Storage	RLUEVB	These price categories are legacy ToU prices for Electric Vehicle and Battery consumers. These prices operate in the same way as the ToU prices but have different price levels. In the future we expect to combine these prices with residential ToU prices and offer an alternative manage charging price for EV and Battery consumers at a similar price level as the current EV and Battery ToU prices.
Residential Standard User Electric Vehicle & Battery Storage	RSUEVB	

⁵ Night boost is a separately metered supply to permanently wired appliances, such as night store heaters, which are switched on and off at specific times. Night boost supply will be switched on during the night period (11pm to 7am) and for a minimum two hour boost period during the day (generally between 1pm to 3pm). Customers on EVB plans are not eligible for night boost pricing.

⁶ A controlled supply is a supply that allows WELL to control energy supply to permanently wired appliances, such as hot water cylinders. The load control associated with a controlled supply is not operated based on specific daily times.



A low user (Residential Low User, Residential Low User Electric Vehicle and Battery and Residential Low User Time of Use) is a residential consumer who consumes less than 8,000 kWh per year and who is on a low fixed charge retail pricing plan. The Low Fixed Charge Regulations require electricity distribution businesses (EDB's) to offer a pricing plan to domestic low users with a fixed price of no more than 15 cents per day.

A standard user (Residential Standard User, Residential Standard User Electric Vehicle and Battery and Residential Standard User Time of Use) is a residential consumer who consumes more than 8,000 kWh per year. Residential consumers who consume more than 8,000kWhs per year must be on a standard user residential price plan.

If WELL believes that the Low User price category has been incorrectly allocated to an End-Consumer's ICP (that is, the End-Consumer does not meet the criteria for the Low User price categories) it may reassign the End-Consumer to the appropriate Standard User price category and retrospectively apply billing adjustments. The same applies in the case of End-Consumers on the Standard User price categories reassigned to the Low User price category.

Consumption submitted on a consumption code that is not appropriate for the consumer group will be charged at a default rate equivalent to the highest variable charge applicable for that consumer group.

Time of Use prices (Residential Low User Time of Use and Residential Standard User Time of Use) apply to all residential customers – these are our primary residential price category's. Time of Use prices provide customers with the opportunity to save money by changing when they use energy to less congested periods of the day. To be eligible for Time of Use, a customer must be a residential customer as defined in WELL's Pricing Methodology Disclosure. A customer must also have an advanced meter with reliable communication (AMI meters that provide usage in half hour increments). This is required to allow different prices to be applied to different times of the day.

Customers who do not have an advanced meter with reliable communication are eligible for the alternative Residential Low User and Residential Standard default price categories. These alternative prices do not need data in half hour increments.

The EVB prices (Residential Low User Electric Vehicle and Battery Storage and Residential Standard User Electric Vehicle and Battery Storage) is an optional plan that provides electric vehicle and battery owners with the opportunity to save money by changing when they use energy to less congested period of the day. Like TOU prices, EVB prices have a peak period price and an off-peak price.

5.2 Description of consumption category options

For each of the pricing categories, various pricing options are available for different meter configurations. The different pricing options are provided in Figure 5. Refer to Appendix 1 for all of the residential pricing options – the combination of pricing categories and consumption codes that are available.

Figure 5 – Consumption categories

Consumption category	Consumption code	Details
24 hr uncontrolled	24UC or UC	An uncontrolled supply is a metered supply that provides uninterrupted energy.
All-inclusive controlled	AICO or AI	This option is only available to residential consumers. This is a metered supply that allows WELL to control energy to permanently wired appliances, such as hot water cylinders, as well as providing an uninterrupted supply to all other electrical appliances. The control of associated appliances can occur at any time for a maximum of five hours in any 24 hour period. Refer to section 5.3.1 for eligibility for controlled prices.
Controlled	CTRL	<p>This option is only available to residential consumers. This is a separately metered supply that allows WELL to control energy to permanently wired appliances, such as hot water cylinders. All load on this meter supply can be controlled by WELL. The supply can be controlled at any time for a maximum of five hours in any 24 hour period. This supply is <u>only available to load permanently wired to a separate meter/register</u>. Refer to section 5.3.1 for eligibility for controlled prices.</p> <p>Where a household has a controlled supply, they would also have an uncontrolled supply for the household load that is not separately metered through the controlled circuit. This uncontrolled supply should be reported to WELL using the '24UC' consumption code.</p>
Night boost	NITE	This option is only available to residential consumers. This is a separately metered supply to permanently wired appliances, such as night store heaters, which are switched on and off at specific times. This controlled option will be switched on during the night period (11pm to 7am) and for a minimum "boost period" during the day of two hours generally between 1pm and 3pm. <u>This supply is only available to load permanently wired to a separate meter/register</u> . Refer to section 5.3.1 for further information on eligibility.
Electric vehicle and battery storage peak	PEAK	This option is only available for owners of private electric vehicles with a battery capacity of 12kWh and above and/or household battery systems of 4kWh capacity and above. This option is for the total household supply, (except for when consumers also have a portion of supply on a 'CTRL' meter), between the hours of 7am to 11am and 5pm to 9pm on weekdays (including public holidays). Refer to section 5.3.4 for further information on eligibility.

Consumption category	Consumption code	Details
Electric vehicle and battery storage off-peak	OFFPEAK	This option is only available for owners of private electric vehicles with a battery capacity of 12kWh and above and/or household battery systems of 4kWh capacity and above. This option is for the total household supply, (except for when consumers also have a portion of supply on a 'CTRL' meter), between the hours of 11am to 5pm and 9pm to 7am on weekdays and all hours on the weekend. Refer to section 5.3.4 for further information on eligibility.
Residential ToU peak	P	This option is only available to residential consumers and comprises both uncontrolled and all-inclusive options. This option is for the total household supply, (except for when consumers also have a portion of supply on a 'CTRL' or 'NITE' meter), between the hours of 7am to 11am and 5pm to 9pm on weekdays (including public holidays). Refer to section 5.3.2 for further information on eligibility.
Residential ToU off-peak	OP	This option is only available to residential consumers and comprises both uncontrolled and all-inclusive options. This option is for the total household supply, (except for when consumers also have a portion of supply on a 'CTRL' or 'NITE' meter), between the hours of 11am to 5pm and 9pm to 7am on weekdays (including public holidays) and for all hours on the weekend. Refer to section 5.3.2 for further information on eligibility.

5.3 Residential pricing eligibility criteria

The eligibility criteria for residential consumers are outlined below. Residential prices are only eligible to residential consumers - Residential End-Consumers in a private dwelling not normally used for any business activity.

The eligibility criteria are in addition to the file format and type requirements provided in section 10.3.

5.3.1 Eligibility for controlled prices

Eligibility for either the 'AICO' or 'CTRL' charge is conditional on a hot water cylinder with a capacity in excess of 50 litres being permanently wired into WELL's load management system. The hot water cylinder may be substituted with appliances of a similar rating and load profile such as air conditioning units, swimming or spa pool heaters, electric kilns or storage heating at WELL's discretion. Eligibility for the 'CTRL' charge has the additional criteria of only being available to load permanently wired to a separate meter/register as outlines in section 5.2.



Eligibility for the 'NITE' charge is conditional on a night store heater being permanently wired into a load control relay operated by WELL's load management system. The night store heater may be substituted with similar appliances at WELL's discretion, noting that the supply of electricity for this night boost supply is only available between 11pm and 7am, plus a minimum "boost period" of two hours generally between 1pm and 3pm.

5.3.2 Eligibility for Time of Use prices

Time of Use prices (Residential Low User Time of Use and Residential Standard User Time of Use) are our primary residential price category. Time of Use prices will apply to residential consumers with an advanced meter with reliable communication (AMI meters that provide usage in half an hour increments).

Consumers will be exempt from Time of Use prices if they do not have a communicating smart meter. The exemption is based on either the Half Hour flag or the AMI Comm flag within the Electricity Registry being 'N'. Those that are exempt will be on the Residential Low User (RLU) or Residential Standard User (RSU) Price Categories.

5.3.2.1 'Opting out' from Time of Use

WELL consulted with Traders on Time of Use price structures. The consultation highlighted a number of situations where the registry AMI and communications flags could not be relied on to indicate that an ICP could provide the data needed to calculate ToU prices. Consumer bills may no longer reflect their energy use and they may not receive the benefits of changing their energy consumption behaviour. Situations where the registry's AMI and communications flags cannot be relied on are:

- a) Intermittent communications: The communication of billing data at some ICP's can be intermittent while the electricity registry flag indicates that the meter is communicating correctly.
- b) Failed communications: The communication status of a meter can change over time. If communications stop it will take up to 90 days before the registry flag is adjusted and the ICP will be eligible for the 'opt out' price. Reasons for communications stopping include new buildings and physical obstructions, cell phone interference, reduced mesh density and meter box damage.
- c) Incorrect registry flags: The electricity registry comms flag can incorrectly show the meter is communicating when it is not. It takes up to 90 days to correct any errors so all of the corrections may not be made before ToU prices are applied 1 April 2021. Feedback also suggested that there are weak incentives for meter providers to correct any errors so it could take longer than 90 days for corrections to be made.
- d) Data agreements not in place with meter providers: A Trader will have a data agreement in place with meter providers for the provision of the half hour data. The agreement also ensures that the data is provided to the correct level of quality. Some Traders are still negotiating terms and do not have data agreements in place. Feedback said that negotiations are difficult because Traders have little influence over agreement terms. Terms include providing data that meets the required quality levels.
- e) Trader billing systems and validation processes can't process half hour data needed for pricing: Some Trader billing systems can't process all of the half hour data needed to calculate ToU prices. Other Traders data validation processes have been designed for the market settlement process and not for distribution billing.



Note, WELL believes that these situations are temporary and that Traders will be able to refine their billing systems and processes so that peak and off-peak prices can be applied in the future.

New pricing codes have been added to the Time of Use price category that will allow Traders to submit variable consumption data to all-inclusive or uncontrolled price codes (i.e. RLUTOU-UC, RLUTOU-AICO, RSUTOU-UC or RSUTOU-AICO) if they are eligible.

The eligibility for the 'opt out' peak and off-peak Time of Use prices are:

- a) An ICPs has intermittent or stopped communications,
- b) A Traders does not have smart meter agreements with an meter provider,
- c) A Trader who needs validation process and billing system upgrades to process half hour consumption data needed to calculate ToU prices.
- d) A Trader has submitted the reasons that they meet the eligibility criteria above and when they expect to be able to apply peak and off peak time of use prices.

If an ICP is eligible to 'opt out' of the peak and off-peak Time of Use tariffs, the Trader will submit consumption data to the relevant RLUTOU-UC, RLUTOU-AICO, RSUTOU-UC or RSUTOU-AICO tariff (i.e. the tariff relating to the correct meter configuration and low or standard user consumption category).

Figure 6 summarises the Time of Use prices and highlights the 'opt out' Time of Use prices for ICPs that can't provide data to calculate peak and off-peak prices and meet the eligibility criteria.

Figure 6 – Time of Use prices and the 'opt out' Time of Use prices

Price component code	Description	Opt-out
RLUTOU-FIXD	Residential Time of Use low user daily	
RLUTOU-UC	Residential Time of Use low user uncontrolled	✓
RLUTOU-AICO	Residential Time of Use low user all inclusive	✓
RLUTOU-P-UC	Residential Time of Use low user peak	
RLUTOU-OP-UC	Residential Time of Use low user off-peak	
RLUTOU-P-AI	Residential Time of Use low user all-inclusive peak	
RLUTOU-OP-AI	Residential Time of Use low user all-inclusive off-peak	
RLUTOU-CTRL	Residential Time of Use low user controlled	
RLUTOU-NITE	Residential Time of Use low user night boost	
RSUTOU-FIXD	Residential Time of Use standard user daily	
RSUTOU-UC	Residential Time of Use standard user uncontrolled	✓
RSUTOU-AICO	Residential Time of Use standard user all inclusive	✓

Price component code	Description	Opt-out
RSUTOU-P-UC	Residential Time of Use standard user peak	
RSUTOU-OP-UC	Residential Time of Use standard user off-peak	
RSUTOU-P-AI	Residential Time of Use standard user all-inclusive peak	
RSUTOU-OP-AI	Residential Time of Use standard user all-inclusive off-peak	
RSUTOU-CTRL	Residential Time of Use standard user controlled	
RSUTOU-NITE	Residential Time of Use standard user night boost	

5.3.2.2 Time of Use consumption details

Time of Use price plans are also available to consumers who have separately metered hot water control or night store heaters (i.e. where WELL is receiving consumption under the 'CTRL' or 'NITE' price codes). The peak and off-peak price applies for the entire household load except where a consumer also has 'CTRL' or 'NITE' load – see section 5.3.1.

Figure 7

Figure 7 details how consumption data will be received for Residential TOU prices.

Figure 7 – TOU consumption details

Status	Consumption code	Pricing component code
Required	Daily fixed	RLUTOU-FIXD or RSUTOU-FIXD
Required	PEAK (kWh)	RLUTOU-P-UC or RLUTOU-P-AI, or RSUTOU-P-UC or RSUTOU-P-AI
Required	OFFPEAK (kWh)	RLUTOU-OP-UC or RLUTOU-OP-AI, or RSUTOU-OP-UC or RSUTOU-OP-AI
Optional (meets the 'opt out' eligibility criteria)	24UC (kWh)	RLUTOU-UC RSUTOU-UC
Optional (meets the 'opt out' eligibility criteria)	AICO (kWh)	RLUTOU-AICO RSUTOU-AICO
Optional (meter configuration dependent)	CTRL (kWh)	RLUTOU-CTRL or RSUTOU-CTRL
Optional (meter configuration dependent)	NITE (kWh)	RLUTOU-NITE or RSUTOU-NITE

5.3.3 Eligibility for residential standard user and low user prices

Consumers will be exempt from Time of Use prices if they do not have a communicating smart meter. The exemption is based on either the Half Hour flag or the AMI Comm flag within the Electricity Registry being 'N'.

Those that are exempt will be on the Residential Low User (RLU) or Residential Standard User (RSU) Price Categories.

WELL has differentiated consumers that are exempt from Time of Use because they do not have communicating smart meters, from the 'opt out' exemptions provided in 5.3.2.1, because those without communicating smart meters may never be able to apply peak and off-peak prices. In the future WELL may apply price incentives to the 'opt out' exemptions to encourage Traders to move ICP's to peak and off-peak Time of Use prices. Separating those without communicating smart meters will mean that these customers would not be impacted by possible future price incentives.

Residential Low User (RLU) or Residential Standard User price plans are also available to consumers who have separately metered hot water control or night store heaters (i.e. where WELL is receiving consumption under the 'CTRL' or 'NITE' price codes). The variable price applies for the entire household load except where a consumer also has 'CTRL' or 'NITE' load – see section 5.3.1.

Figure 8 details how consumption data will be received for Residential Low User and Residential Standard User prices.

Figure 8 – Residential Low User and Residential Standard User consumption details

Status	Consumption code	Pricing component code
Required	Daily fixed	RLU-FIXD or RSU-FIXD
Optional (meter configuration dependent)	24UC (kWh)	RLU-24UC or RSU-24UC
Optional (meter configuration dependent)	AICO (kWh)	RLU-AICO or RSU-AICO
Optional (meter configuration dependent)	CTRL (kWh)	RLU-CTRL or RSU-CTRL

5.3.4 Eligibility for electric vehicle and battery storage prices

Only private owners of electric vehicles (EV) with a battery capacity of 12kWh and above and/or household battery systems of 4kWh capacity and above, who also have a smart meter, are eligible for the EV and battery price plans (RLUEVB and RSUEVB). For electric vehicle eligibility, only private PHEV and private registered EVs qualify for this plan. Scooters or bikes do not qualify. The EVB plans are optional plans for qualifying residential consumers.

The EVB price plans are also available to consumers who have separately metered hot water control (i.e. where WELL is receiving consumption under the 'CTRL' price code). The peak and off-peak price applies for the entire household load except where a consumer also has 'CTRL' load – see section 5.3.1.

The EVB price plans are not eligible for 'AICO' or 'NITE' charges.

Figure 9 details how consumption would be received for EVB prices.

Figure 9 – EVB consumption details

Status	Consumption code	Pricing component code
Required	Daily fixed	RLUEVB-FIXD or RSUEVB-FIXD
Required	PEAK (kWh)	RLUEVB-PEAK or RSUEVB-PEAK
Required	OFFPEAK (kWh)	RLUEVB-OFFPEAK or RSUEVB-OFFPEAK
Optional (meter configuration dependent)	CTRL (kWh)	RLUEVB-CTRL or RSUEVB-CTRL



6 General low voltage and general transformer connections (non-residential)

6.1 Consumer Group definitions

Non-residential pricing is divided into two types of connections, low voltage connections and transformer connections.

- a) A **low voltage connection** is where a consumer receives supply from WELL's low voltage network via a transformer shared with other consumers.
- b) A **transformer connection** is where the consumer receives a supply from transformers owned by WELL that are dedicated to supply a single consumer.

Figure 10 provides the **low voltage connection** Load Groups and pricing codes.

Figure 10 – Low voltage, non-residential pricing codes

Capacity	Price category code	Pricing component code
<=15kVA	GLV15	GLV15-FIXD GLV15-24UC
>15kVA and <=69kVA	GLV69	GLV69-FIXD GLV69-24UC
>69kVA and <=138kVA	GLV138	GLV138-FIXD GLV138-24UC
>138kVA and <=300kVA	GLV300	GLV300-FIXD GLV300-24UC
>300kVA and <=1500kVA	GLV1500	GLV1500-FIXD GLV1500-24UC GLV1500-DAMD

Capacity is determined by maximum demand or fuse size.

Figure 11 provides the **transformer connection** Load Groups and pricing codes.

Figure 11 – Transformer connection, non-residential pricing codes

Capacity	Price category code	Pricing component code
<=15kVA	GTX15	GTX15-FIXD GTX15-24UC
>15kVA and <=69kVA	GTX69	GTX69-FIXD GTX69-24UC
>69kVA and <=138kVA	GTX138	GTX138-FIXD GTX138-24UC
>138kVA and <=300kVA	GTX300	GTX300-FIXD GTX300-24UC
>300kVA and <=1500kVA	GTX1500	GTX1500-FIXD GTX1500-24UC GTX1500-CAPY GTX1500-DAMD

Capacity	Price category code	Pricing component code
>1500kVA	GTX1501	GTX1501-FIXD GTX1501-24UC GTX1501-CAPY GTX1501-DOPC GTX1501-PWRF

Capacity is determined by the dedicated transformer size.

6.2 Variable charges

For all connections 24 hr uncontrolled (24UC) variable charges apply.

6.3 Fixed charges

Different fixed charges apply to each consumer group.

6.4 Capacity charges

Capacity charges apply as follows:

- Different capacity charges apply to each Consumer Group where these charges are applicable.
- The capacity charge is based on the capacity dedicated by Wellington Electricity to supplying the consumer's premises. Where the available capacity exceeds the requirement of the consumer, Wellington Electricity may reduce the capacity rating to an assessed rating, and may install a fuse or current limiting device limiting the available capacity to the assessed rating.

Wellington Electricity may reduce the available capacity of the dedicated transformers to the size of the assessed rating, on giving one month's notice in writing of its intentions to the Traders.

6.5 Demand charges

Demand charges apply as follows:

- General low voltage connection and general transformer connection consumers with a capacity less than or equal to 300kVA do not currently have a demand charge.
- For general low voltage connection and general transformer connection consumers with a capacity greater than 300kVA but less than or equal to 1500kVA, demand (DAMD) is defined as the maximum demand during the month, where the kVA demand is twice the maximum kVAh half hourly reading during the month to which the charges apply.
- For general transformer connection consumers with a capacity greater than 1500kVA, demand (DOPC) is defined as the maximum demand during on-peak periods, where the kW demand is twice the maximum kWh half hourly reading within the on-peak periods. The on-peak periods are defined as 7:30am to 9:30am and 5:30pm to 7:30pm on weekdays (including public holidays).

6.6 Power factor charges

All charges assume a power factor of not less than 0.95 lagging. A reactive charge for poor power factor is applicable separately. A power factor charge (per Appendix 1) will be applied where the consumer's power factor is less than 0.95 lagging.

- a) The kVA_r amount represents twice the largest difference between the kVA_rh amount recorded in any one half hour period and one third (correct to two decimal places) of the kWh demand recorded in the same half hour period. The charge is applicable only during weekdays, between 7am and 8pm.
- b) The power factor charge will only be applicable for consumers with TOU metering whose charges do not incorporate a component that is based on kVA demand.

7 Un-metered electricity line charges

This section applies to un-metered connection less than 1kVA, however connections greater than 1kVA may be classified under un-metered at WELL's discretion. WELL has a fixed charge for streetlights with no charge for energy usage, however WELL still requires the energy usage data for energy reconciliation purposes. Non-street lighting connections have both a fixed and a variable charge.

7.1 Consumer Group definitions

The structure of the charges for un-metered consumers is shown in Figure 12.

Figure 12 – Un-metered pricing codes

Price category description	Price category code	Price component code
Non-street lighting	G001	G001-FIXD G001-24UC
Street lighting	G002	G002-FIXD G002-24UC

The non-street lighting consumer group is applicable to un-metered connections less than 1kVA other than street lighting. The street lighting consumer group is applicable to un-metered connections less than 1kVA that are for street lighting.

7.1.1 Fixed charges

Fixed charges for streetlight and non-streetlight un-metered consumers will be charged on a fitting per day basis.

7.1.2 Variable charges

For all non-streetlight un-metered supplies 24 hr uncontrolled ('24UC') variable charges apply. Streetlight connections have a zero variable charge but volume data is still required to be disclosed.

8 Small scale distributed generation charges

The current rate for 'small scale distributed generation charge' is zero dollars per kWh. This charge applies to injection of energy into WELL's network and is applicable to connections equal to or less than 10kW. In the future injection volume may incur charges. Small scale distributed generation charge' could be in the form of photovoltaics (solar panels) or any other device which injects energy into the network.

Every Price Category (except for the un-metered Consumer Group) have a 'small scale distributed generation charge' or DGEN tariff.

9 Non-standard contracts

The non-standard contracts group is made up of consumers who have atypical connection characteristics. For non-standard consumers, a confidential agreement exists between WELL and the individual consumer which sets out the terms and conditions for the supply of the electricity lines services including the price.

10 Determining consumption

For un-metered supply other than streetlights, consumption will be determined on a case-by-case basis based on load profile and input wattages. A minimum load factor of 10% will be applied to the input wattage.

For un-metered streetlights, consumption will be determined by multiplying the input wattage of each fitting in Wellington Electricity's database with the number of night hours as provided in Figure 13.

Figure 13 – Un-metered streetlight consumption night hour multiple

Month	Number of night hours
January	287
February	286
March	358
April	389
May	439
June	442
July	451
August	417
September	365
October	339
November	285
December	275

10.1 Embedded generation

The line charge will be calculated in accordance with the prevailing pricing policy. The line charge will be dependent upon location, the type of connection, the size of the generator and operating pattern.

10.2 Electricity network loss factors

Losses and loss factors may be reviewed and may be amended by Wellington Electricity from time to time, on reasonable notice to the Traders, to ensure that they reflect losses on the Network as accurately as possible.

10.2.1 Loss factors

- For the purpose of calculating network line charges, unless otherwise specified, the loss factors detailed in this section do not need to be applied to the measured or calculated energy conveyed to Points of Connection.
- Loss factors will be applied to the metered energy consumption measured at the Point of Connection for reconciliation/allocation purposes. The line charge will be applied to the metered energy consumption.

10.2.2 Electricity network loss factors

The electricity network loss factors are provided in Figure 14.

Figure 14 – Electricity network loss factors

Distribution losses by metering voltage, transformer connection and load			
Loss factor code	Consumers metering voltage	Distribution Loss ratios with respect to the injection point meter	Distribution loss factors with respect to the ICP meter
VECG1	LV	5.13%	1.0541
VECG2	LV	2.77%	1.0285
VECG3	LV	3.78%	1.0393
VECG4	HV	1.55%	1.0157

10.2.3 Loss factor look up codes

Figure 15 outlines what consumer groups that the loss factor codes detailed in Figure 15 apply to.

Figure 15 – Wellington loss factor look up codes.

Wellington Network distribution losses by consumer group		
Consumer Group	Loss factor code (LV metered)	Loss factor code (HV metered)
Un-metered		
G001	VECG1	-
G002	VECG1	-
Residential		
RLU	VECG1	-
RSU	VECG1	-
Residential Electric Vehicle & Battery Storage		
RLUEVB	VECG1	-
RSUEVB	VECG1	-
Residential Time of Use		
RLUTOU	VECG1	-
RSUTOU	VECG1	-
General Low Voltage		
GLV15	VECG1	-
GLV69	VECG1	-
GLV138	VECG1	-

Wellington Network distribution losses by consumer group		
GLV300	VECG1	-
GLV1500	VECG3	VECG4
General Transformer		
GTX15	VECG2	VECG4
GTX69	VECG2	VECG4
GTX138	VECG2	VECG4
GTX300	VECG2	VECG4
GTX1500	VECG3	VECG4
GTX1501	VECG3	VECG4

10.3 Provision of consumption information

Appendix 2 summarises all of the pricing categories, provides the pricing codes, units of measures, registry content code and hours of availability.

To be eligible for a pricing category, Traders must provide the data file in the correct format and in the correct file type (i.e. EIEP1 or EIEP3) - the Electricity Authority defined file types are provided in Appendix 2.

- a) The Trader will provide Wellington Electricity with consumption data for each ICP and for each consumption category.
- b) Consumption data will be associated with a specific pricing component code as per Appendix 1 and 2 and will be submitted using the code as published in the code column of the Wellington Electricity Network Line Charge Schedule in Appendix 1.
- c) Where more than one meter at an ICP is in use, but a single variable line charge applies, the consumption data will be aggregated before forwarding to Wellington Electricity.
- d) For some ICP's it is possible to have multiple consumption categories (such as controlled and uncontrolled or peak and off-peak). Such an ICP will have multiple consumption codes.
- e) Where a Time of Use meter is fitted, there will a peak and off-peak consumption codes. Where there is no variable charge the consumption code will still need to be included with the half hourly volume, and in such cases the billing process will not calculate any variable charge.
- f) WELL requires EIEP3 data files from traders for the GLV1500, GTX1500 and GTX1501 consumer groups. See Appendix 2 for the required data file types.
- g) In the case of streetlights where there is no variable charge, the consumption code will still need to be included with the volume, and in such cases the billing process will not calculate any variable charge.

10.3.1 Calculation of scaled and variable charges

The electricity scalable volume calculation was discontinued on 30 September 2018. The decision to discontinue scaling was consulted on and agreed with Traders. The scaling process allowed Wellington Electricity to scale Traders volumes up or down to match the Energy injected into the Network.

Due to the significant proportion of mass-market meter installations in Wellington and therefore more accurate metering data, Wellington Electricity no longer has a requirement to make variable charge adjustments to factor up or down the electricity scalable volume consumption figures.

11 Other charges

Unless stated otherwise, all charges will be invoiced directly to the Traders by Wellington Electricity and not to the consumer.

All non-network fault work, Traders services or consumer services not listed in Figure 16 will be charged to the Traders on a time and materials basis at market rates.

Figure 16 – Other charges

Description	Unit	Charge effective 1 April 2021
New connection fee – single phase connection	per connection	\$173
New connection fee – two or three phase connection	per connection	\$433
Site visit fee	per site visit	\$173
Permanent disconnection fee	per disconnection	\$324
General administration fee - to cover costs such as late, incorrect or incomplete consumption data, administering Embedded Networks, etc	per hour	\$133

11.1 Description of charges

11.1.1 New connection fee – single phase connection

This fee is payable when WELL energises a new single phase Point of Connection for the first time, by inserting the ICP fuse. Any additional site visits required by WELL with regard to a new connection will incur a site visit fee. Examples of additional site visits include where a site is not ready, insufficient or incorrect information is provided and where the physical status of a new connection needs to be inspected by WELL.

Multiple streetlight connections conducted under a single new ICP connection may be charged a connection fee per streetlight fuse installation.

11.1.2 New connection fee – two or three phase connection

This fee is payable when WELL energises a new two or three phase point of connection for the first time, by inserting the ICP fuse. Any additional site visits required by WELL with regard to a new connection will incur a site visit fee. Examples of additional site visits includes where a site is not ready, insufficient or incorrect information is provided and where the physical status of a new connection needs to be inspected by WELL. This fee will also be applied to upgrades (or downgrades) to and from single, two and three phase connections.

11.1.3 Site visit fee

Payable for any site visit by WELL, including non-network call out, temporary disconnection, temporary energisation, check for safety, urgent after hours disconnection and reconnection, permanent disconnection and change of capacity (where the capacity change can be completed by changing fuse size within the existing fuse holder). Work in excess of this will be charged directly to the consumer on a time and materials basis at market rates.

11.1.4 Permanent disconnection fee

Payable for permanent disconnections carried out by WELL. Any additional site visits required by WELL with regard to a permanent disconnection, for example where a site is not ready, will incur a site visit fee. Work in excess of standard network disconnection will be charged directly to the Traders on a time and materials basis at market rates.

11.1.5 General administration fee

The general administration fee was previously called “Late, incorrect or incomplete consumption fee data”.

This fee is payable where consumption data required under the UNA or DDA between WELL and Traders is provided late, or is incorrect or is incomplete. It will be charged on the basis of the actual time spent by a WELL employee to review, correct, validate and reconcile the information. The fee can also be charged for administering embedded networks.



Appendix 1 – Electricity line charge schedule

1 April 2021					
Code	Description	Units	Distribution price	Transmission and pass-through price	Delivery price
Residential					
RLU-FIXD	Residential low user daily	\$/con/day	0.0900	0.0600	0.1500
RLU-24UC	Residential low user uncontrolled	\$/kWh	0.0606	0.0412	0.1018
RLU-AICO	Residential low user all inclusive	\$/kWh	0.0487	0.0330	0.0817
RLU-CTRL	Residential low user controlled	\$/kWh	0.0293	0.0199	0.0492
RLU-NITE	Residential low user night boost	\$/kWh	0.0099	0.0068	0.0167
RLU-DGEN	Residential low user small scale distributed generation	\$/kWh	0.0000	0.0000	0.0000
RSU-FIXD	Residential standard user daily	\$/con/day	0.5486	0.4489	0.9975
RSU-24UC	Residential standard user uncontrolled	\$/kWh	0.0380	0.0259	0.0639
RSU-AICO	Residential standard user all inclusive	\$/kWh	0.0262	0.0177	0.0439
RSU-CTRL	Residential standard user controlled	\$/kWh	0.0117	0.0078	0.0195
RSU-NITE	Residential standard user night boost	\$/kWh	0.0091	0.0061	0.0152
RSU-DGEN	Residential standard user small scale distributed generation	\$/kWh	0.0000	0.0000	0.0000
Residential Electric Vehicle and Battery Storage¹					
RLUEVB-FIXD	Residential EV & battery storage low user daily	\$/con/day	0.0900	0.0600	0.1500
RLUEVB-PEAK	Residential EV & battery storage low user peak ²	\$/kWh	0.0837	0.0765	0.1602
RLUEVB-OFFPEAK	Residential EV & battery storage low user off-peak ³	\$/kWh	0.0372	0.0341	0.0713
RLUEVB-CTRL	Residential EV & battery storage low user controlled	\$/kWh	0.0293	0.0199	0.0492
RLUEVB-DGEN	Residential EV & battery storage low user small scale distributed generation	\$/kWh	0.0000	0.0000	0.0000
RSUEVB-FIXD	Residential EV & battery storage standard user daily	\$/con/day	0.6530	0.5133	1.1663
RSUEVB-PEAK	Residential EV & battery storage standard user peak ²	\$/kWh	0.0602	0.0549	0.1151
RSUEVB-OFFPEAK	Residential EV & battery storage standard user off-peak ³	\$/kWh	0.0137	0.0124	0.0261
RSUEVB-CTRL	Residential EV & battery storage standard user controlled	\$/kWh	0.0117	0.0078	0.0195
RSUEVB-DGEN	Residential EV & battery storage standard user small scale distributed generation	\$/kWh	0.0000	0.0000	0.0000
Residential Time of Use					
RLUTOU-FIXD	Residential time of use low user daily	\$/con/day	0.0900	0.0600	0.1500
RLUTOU-UC	Residential time of use low user uncontrolled	\$/kWh	0.0606	0.0412	0.1018
RLUTOU-AICO	Residential time of use low user all inclusive	\$/kWh	0.0487	0.0330	0.0817
RLUTOU-P-UC	Residential time of use low user peak ²	\$/kWh	0.0703	0.0670	0.1373
RLUTOU-OP-UC	Residential time of use low user off-peak ³	\$/kWh	0.0563	0.0297	0.0860
RLUTOU-P-AI	Residential time of use low user all inclusive peak ²	\$/kWh	0.0634	0.0560	0.1194
RLUTOU-OP-AI	Residential time of use low user all inclusive off-peak ³	\$/kWh	0.0420	0.0226	0.0646
RLUTOU-CTRL	Residential time of use low user controlled	\$/kWh	0.0293	0.0199	0.0492
RLUTOU-NITE	Residential time of use low user night boost	\$/kWh	0.0099	0.0068	0.0167
RLUTOU-DGEN	Residential time of use low user small scale distributed generation	\$/kWh	0.0000	0.0000	0.0000
RSUTOU-FIXD	Residential time of use standard user daily	\$/con/day	0.5486	0.4489	0.9975
RSUTOU-UC	Residential time of use standard user uncontrolled	\$/kWh	0.0380	0.0259	0.0639
RSUTOU-AICO	Residential time of use standard user all inclusive	\$/kWh	0.0262	0.0177	0.0439
RSUTOU-P-UC	Residential time of use standard user peak ²	\$/kWh	0.0506	0.0481	0.0987
RSUTOU-OP-UC	Residential time of use standard user off-peak ³	\$/kWh	0.0325	0.0163	0.0488
RSUTOU-P-AI	Residential time of use standard user all inclusive peak ²	\$/kWh	0.0416	0.0367	0.0783
RSUTOU-OP-AI	Residential time of use standard user all inclusive off-peak ³	\$/kWh	0.0193	0.0091	0.0284
RSUTOU-CTRL	Residential time of use standard user controlled	\$/kWh	0.0117	0.0078	0.0195
RSUTOU-NITE	Residential time of use standard user night boost	\$/kWh	0.0091	0.0061	0.0152
RSUTOU-DGEN	Residential time of use standard user small scale distributed generation	\$/kWh	0.0000	0.0000	0.0000

1. The EVB plan is available to consumers with electric vehicles of 12kWh capacity and above and consumers with household battery storage systems of 4kWh capacity and above.
2. The EVB and residential ToU plan peak hours are: Monday to Friday (including public holidays) 7:00am – 11:00am, 5:00pm – 9:00pm.
3. The EVB and residential ToU plan off-peak hours are: Monday to Friday (including public holidays) 9:00pm – 7:00am, 11:00am – 5:00pm and all weekend.



1 April 2021					
Code	Description	Units	Distribution price	Transmission and pass-through price	Delivery price
General Low Voltage Connection					
GLV15-FXD	General low voltage <=15kVA daily	\$/con/day	0.3282	0.2235	0.5517
GLV15-24UC	General low voltage <=15kVA uncontrolled	\$/kWh	0.0297	0.0202	0.0499
GLV15-DGEN	Small scale distributed generation <=15kVA low voltage	\$/kWh	0.0000	0.0000	0.0000
GLV69-FXD	General low voltage >15kVA and <=69kVA daily	\$/con/day	0.8118	0.5529	1.3647
GLV69-24UC	General low voltage >15kVA and <=69kVA uncontrolled	\$/kWh	0.0206	0.0140	0.0346
GLV69-DGEN	Small scale distributed generation >15kVA and <=69kVA low voltage	\$/kWh	0.0000	0.0000	0.0000
GLV138-FXD	General low voltage >69kVA and <=138kVA daily	\$/con/day	4.6000	3.1332	7.7332
GLV138-24UC	General low voltage >69kVA and <=138kVA uncontrolled	\$/kWh	0.0243	0.0167	0.0410
GLV138-DGEN	Small scale distributed generation >69kVA and <=138kVA low voltage	\$/kWh	0.0000	0.0000	0.0000
GLV300-FXD	General low voltage >138kVA and <=300kVA daily	\$/con/day	6.5526	4.4633	11.0159
GLV300-24UC	General low voltage >138kVA and <=300kVA uncontrolled	\$/kWh	0.0101	0.0069	0.0170
GLV300-DGEN	Small scale distributed generation >138kVA and <=300kVA low voltage	\$/kWh	0.0000	0.0000	0.0000
GLV1500-FXD	General low voltage >300kVA and <=1500kVA daily	\$/con/day	16.5232	11.2546	27.7778
GLV1500-24UC	General low voltage >300kVA and <=1500kVA uncontrolled	\$/kWh	0.0045	0.0030	0.0075
GLV1500-DAMD	General low voltage >300kVA and <=1500kVA demand	\$/kVA/month	4.0078	2.7299	6.7377
GLV1500-DGEN	Small scale distributed generation >300kVA and <=1500kVA low voltage	\$/kWh	0.0000	0.0000	0.0000
General Transformer Connection					
GTX15-FXD	General transformer <=15kVA daily	\$/con/day	0.2979	0.2030	0.5009
GTX15-24UC	General transformer <=15kVA uncontrolled	\$/kWh	0.0276	0.0189	0.0465
GTX15-DGEN	Small scale distributed generation <=15kVA transformer	\$/kWh	0.0000	0.0000	0.0000
GTX69-FXD	General transformer >15kVA and <=69kVA daily	\$/con/day	0.7368	0.5017	1.2385
GTX69-24UC	General transformer >15kVA and <=69kVA uncontrolled	\$/kWh	0.0194	0.0132	0.0326
GTX69-DGEN	Small scale distributed generation >15kVA and <=69kVA transformer	\$/kWh	0.0000	0.0000	0.0000
GTX138-FXD	General transformer >69kVA and <=138kVA daily	\$/con/day	4.1740	2.8430	7.0170
GTX138-24UC	General transformer >69kVA and <=138kVA uncontrolled	\$/kWh	0.0228	0.0155	0.0383
GTX138-DGEN	Small scale distributed generation >69kVA and <=138kVA transformer	\$/kWh	0.0000	0.0000	0.0000
GTX300-FXD	General transformer >138kVA and <=300kVA daily	\$/con/day	5.9459	4.0500	9.9959
GTX300-24UC	General transformer >138kVA and <=300kVA uncontrolled	\$/kWh	0.0094	0.0064	0.0158
GTX300-DGEN	Small scale distributed generation >138kVA and <=300kVA transformer	\$/kWh	0.0000	0.0000	0.0000
GTX1500-FXD	General transformer >300kVA and <=1500kVA daily	\$/con/day	12.8291	8.7383	21.5674
GTX1500-24UC	General transformer >300kVA and <=1500kVA uncontrolled	\$/kWh	0.0037	0.0024	0.0061
GTX1500-CAPY	General transformer >300kVA and <=1500kVA capacity	\$/kVA/day	0.0087	0.0061	0.0148
GTX1500-DAMD	General transformer >300kVA and <=1500kVA demand	\$/kVA/month	3.3688	2.2946	5.6634
GTX1500-DGEN	Small scale distributed generation >300kVA and <=1500kVA transformer	\$/kWh	0.0000	0.0000	0.0000
GTX1501-FXD	General transformer >1500kVA connection daily	\$/con/day	0.0285	0.0195	0.0480
GTX1501-24UC	General transformer >1500kVA connection uncontrolled	\$/kWh	0.0008	0.0006	0.0014
GTX1501-CAPY	General transformer >1500kVA connection capacity	\$/kVA/day	0.0154	0.0106	0.0260
GTX1501-DOPC	General transformer >1500kVA connection on-peak demand ⁴	\$/kWh/month	6.3472	4.3233	10.6705
GTX1501-PWRF	General transformer >1500kVA connection power factor ⁵	\$/kVAr/month	4.5831	3.1218	7.7049
GTX1501-DGEN	Small scale distributed generation >1500kVA transformer	\$/kWh	0.0000	0.0000	0.0000
Unmetered					
G001-FXD	Non-street lighting daily	\$/fitting/day	0.0227	0.0154	0.0381
G001-24UC	Non-street lighting uncontrolled	\$/kWh	0.0734	0.0500	0.1234
G002-FXD	Street lighting daily ⁶	\$/fitting/day	0.1211	0.0827	0.2038
G002-24UC	Street lighting uncontrolled	\$/kWh	0.0000	0.0000	0.0000

- On-peak demand charge is applicable to demand measured from 7:30am - 9:30am, 5:30pm - 7:30pm on weekdays (including public holidays).
- Power factor charge is applicable for power factor <0.95 from 7:00am - 8:00pm on weekdays where the kVAr charge amount represents twice the largest difference between the recorded kVAh and one third of the recorded kWh in any one half-hour period.
- Streetlight charges are provided to traders who in turn bill the councils and other parties for providing streetlight services. Streetlights are charged per fitting rather than on energy usage to better reflect the costs of maintaining the streetlight network.

Appendix 2 – Data file format and type requirements

Price Category		Price Component		Unit of Measure	Register Content Code	Hours of Availability	Billing File Type Required
Code	Description	Code	Description				
RLU	Residential Standard User	RLU-FIXD	Residential low user daily	\$/con/day			EIEP1
		RLU-24UC	Residential low user uncontrolled	\$/kWh	UN24 D16/N8	24	
		RLU-AICO	Residential low user all inclusive	\$/kWh	IN19 DIN19/NIN19	19	
		RLU-CTRL	Residential low user controlled	\$/kWh	CN19	19	
		RLU-NITE	Residential low user night boost	\$/kWh	NB10	10	
		RLU-DGEN	Small scale distributed generation	\$/kWh	EG24	24	
RSU	Residential Low User	RSU-FIXD	Residential standard user daily	\$/con/day			EIEP1
		RSU-24UC	Residential standard user uncontrolled	\$/kWh	UN24 D16/N8	24	
		RSU-AICO	Residential standard user all inclusive	\$/kWh	IN19 DIN19/NIN19	19	
		RSU-CTRL	Residential standard user controlled	\$/kWh	CN19	19	
		RSU-NITE	Residential standard user night boost	\$/kWh	NB10	10	
		RSU-DGEN	Small scale distributed generation	\$/kWh	EG24	24	
RLUEVB	Residential Low User Electric Vehicle & Battery Storage	RLUEVB-FIXD	Residential EV & battery storage low user daily	\$/con/day			EIEP1
		RLUEVB-PEAK	Residential EV & battery storage low user peak	\$/kWh	UN24 D16/N8	24	
		RLUEVB-OFFPEAK	Residential EV & battery storage low user off-peak	\$/kWh	UN24 D16/N8	24	EIEP1
		RLUEVB-CTRL	Residential EV & battery storage low user controlled	\$/kWh	CN19	19	
		RLUEVB-DGEN	Small scale distributed generation	\$/kWh	EG24	24	



Price Category		Price Component		Unit of Measure	Register Content Code	Hours of Availability	Billing File Type Required
Code	Description	Code	Description				
RSUEVB	Residential Standard User Electric Vehicle & Battery Storage	RSUEVB-FIXD	Residential EV & battery storage standard user daily	\$/con/day			EIEP1
		RSUEVB-PEAK	Residential EV & battery storage standard user peak	\$/kWh	UN24 D16/ N8	24	
		RSUEVB-OFFPEAK	Residential EV & battery storage standard user off-peak	\$/kWh	UN24 D16/ N8	24	
		RSUEVB-CTRL	Residential EV & battery storage standard user controlled	\$/kWh	CN19	19	
		RSUEVB-DGEN	Small scale distributed generation	\$/kWh	EG24	24	
RLUTOU	Residential Low User Time of Use	RLUTOU-FIXD	Residential time of use low user daily	\$/con/day			EIEP1
		RLUTOU-UC	Residential time of use low user uncontrolled	\$/kWh	UN24 D16/N8	24	
		RLUTOU-AICO	Residential time of use low user all inclusive	\$/kWh	IN19 DIN19/NIN19	19	
		RLUTOU-P-UC	Residential time of use low user peak	\$/kWh	UN24 D16/ N8	24	
		RLUTOU-OP-UC	Residential time of use low user off-peak	\$/kWh	UN24 D16/ N8	24	
		RLUTOU-P-AI	Residential time of use low user all-inclusive peak	\$/kWh	IN19 DIN19/NIN19	19	
		RLUTOU-OP-AI	Residential time of use low user all-inclusive off-peak	\$/kWh	IN19 DIN19/NIN19	19	
		RLUTOU-CTRL	Residential time of use low user controlled	\$/kWh	CN19	19	
		RLUTOU-NITE	Residential time of use low user night boost	\$/kWh	NB10	10	
		RLUTOU-DGEN	Small scale distributed generation	\$/kWh	EG24	24	



safer together

Price Category		Price Component		Unit of Measure	Register Content Code	Hours of Availability	Billing File Type Required
Code	Description	Code	Description				
RSUTOU	Residential Standard User Time of Use	RSUTOU-FIXD	Residential time of use standard user daily	\$/con/day			EIEP1
		RSUTOU-UC	Residential time of use standard user uncontrolled	\$/kWh	UN24 D16/N8	24	
		RSUTOU-AICO	Residential time of use standard user all inclusive	\$/kWh	IN19 DIN19/NIN19	19	
		RSUTOU-P-UC	Residential time of use standard user peak	\$/kWh	UN24 D16/ N8	24	
		RSUTOU-OP-UC	Residential time of use standard user off-peak	\$/kWh	UN24 D16/ N8	24	
		RSUTOU-P-AI	Residential time of use standard user all-inclusive peak	\$/kWh	IN19 DIN19/NIN19	19	
		RSUTOU-OP-AI	Residential time of use standard user all-inclusive off-peak	\$/kWh	IN19 DIN19/NIN19	19	
		RSUTOU-CTRL	Residential time of use standard user controlled	\$/kWh	CN19	19	
		RSUTOU-NITE	Residential time of use standard user night boost	\$/kWh	NB10	10	
		RSUTOU-DGEN	Small scale distributed generation	\$/kWh	EG24	24	
GLV15	General Low Voltage <=15kVA	GLV15-FIXD	General low voltage <=15kVA daily	\$/con/day			EIEP1
		GLV15-24UC	General low voltage <=15kVA uncontrolled	\$/kWh	UN24 D16/N8	24	
		GLV15-DGEN	Small scale distributed generation	\$/kWh	EG24	24	



safer together

Price Category		Price Component		Unit of Measure	Register Content Code	Hours of Availability	Billing File Type Required
Code	Description	Code	Description				
GLV69	General low voltage >15kVA and <=69kVA	GLV69-FIXD	General low voltage >15kVA and <=69kVA daily	\$/con/day			EIEP1
		GLV69-24UC	General low voltage >15kVA and <=69kVA uncontrolled	\$/kWh	UN24 D16/N8	24	
		GLV69-DGEN	Small scale distributed generation	\$/kWh	EG24	24	
GLV138	General low voltage >69kVA and <=138kVA	GLV138-FIXD	General low voltage >69kVA and <=138kVA daily	\$/con/day			EIEP1
		GLV138-24UC	General low voltage >69kVA and <=138kVA uncontrolled	\$/kWh	UN24 D16/N8	24	
		GLV138-DGEN	Small scale distributed generation	\$/kWh	EG24	24	
GLV300	General low voltage >138kVA and <=300kVA	GLV300-FIXD	General low voltage >138kVA and <=300kVA daily	\$/con/day			EIEP1
		GLV300-24UC	General low voltage >138kVA and <=300kVA uncontrolled	\$/kWh	UN24 D16/N8	24	
		GLV300-DGEN	Small scale distributed generation	\$/kWh	EG24	24	
GLV1500	General low voltage >300kVA and <=1500kVA	GLV1500-FIXD	General low voltage >300kVA and <=1500kVA daily	\$/con/day			EIEP3
		GLV1500-24UC	General low voltage >300kVA and <=1500kVA uncontrolled	\$/kWh	UN24	24	
		GLV1500-DAMD	General low voltage >300kVA and <=1500kVA demand	\$/kVA/month			
		GLV1500-DGEN	Small scale distributed generation	\$/kWh	EG24	24	



safer together

Price Category	Price Category	Price Component		Unit of Measure	Register Content Code	Hours of Availability	Billing File Type Required
Code	Code	Code	Description				
GTX15	General transformer <=15kVA	GTX15-FIXD	General transformer <=15kVA daily	\$/con/day			EIEP1
		GTX15-24UC	General transformer <=15kVA uncontrolled	\$/kWh	UN24	24	
		GTX15-DGEN	Small scale distributed generation	\$/kWh	EG24	24	
GTX69	General transformer >15kVA and <=69kVA	GTX69-FIXD	General transformer >15kVA and <=69kVA daily	\$/con/day			EIEP1
		GTX69-24UC	General transformer >15kVA and <=69kVA uncontrolled	\$/kWh	UN24	24	
		GTX69-DGEN	Small scale distributed generation	\$/kWh	EG24	24	
GTX138	General transformer >69kVA and <=138kVA	GTX138-FIXD	General transformer >69kVA and <=138kVA daily	\$/con/day			EIEP1
		GTX138-24UC	General transformer >69kVA and <=138kVA uncontrolled	\$/kWh	UN24	24	
		GTX138-DGEN	Small scale distributed generation	\$/kWh	EG24	24	
GTX300	General transformer >138kVA and <=300kVA	GTX300-FIXD	General transformer >138kVA and <=300kVA daily	\$/con/day			EIEP1
		GTX300-24UC	General transformer >138kVA and <=300kVA uncontrolled	\$/kWh	UN24	24	
		GTX300-DGEN	Small scale distributed generation	\$/kWh	EG24	24	



safer together

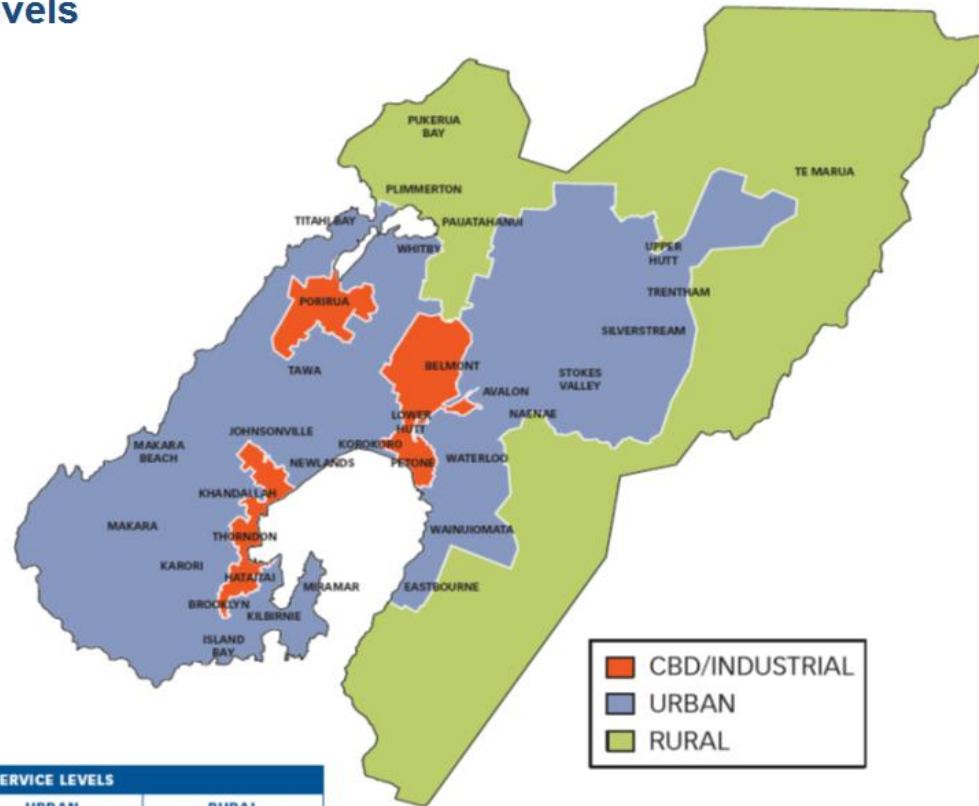
Price Category		Price Component		Unit of Measure	Register Content Code	Hours of Availability	Billing File Type Required
Code	Description	Code	Description				
GTX1500	General transformer >300kVA and <=1500kVA	GTX1500-FIXD	General transformer >300kVA and <=1500kVA daily	\$/con/day			EIEP3
		GTX1500-24UC	General transformer >300kVA and <=1500kVA uncontrolled	\$/kWh	UN24	24	
		GTX1500-CAPY	General transformer >300kVA and <=1500kVA capacity	\$/kVA/day			
		GTX1500-DAMD	General transformer >300kVA and <=1500kVA demand	\$/kVA/month			
		GTX1500-DGEN	Small scale distributed generation	\$/kWh	EG24	24	
GTX1501	General transformer >1500kVA connection	GTX1501-FIXD	General transformer >1500kVA connection daily	\$/con/day			EIEP3
		GTX1501-24UC	General transformer >1500kVA connection uncontrolled	\$/kWh	UN24	24	
		GTX1501-CAPY	General transformer >1500kVA connection capacity	\$/kVA/day			
		GTX1501-DOPC	General transformer >1500kVA connection on-peak demand	\$/kW/month			
		GTX1501-PWRF	General transformer >1500kVA connection power factor	\$/kVAr/month			
		GTX1501-DGEN	Small scale distributed generation	\$/kWh	EG24	24	
G001	Non street lighting	G001-FIXD	Non-street lighting daily	\$/fitting/day			EIEP1
		G001-24UC	Non-street lighting uncontrolled	\$/kWh			
G002	Street lighting	G002-FIXD	Street lighting daily	\$/fitting/day			EIEP1
		G002-24UC	Street lighting uncontrolled	\$/kWh			



safer together

Appendix 3 – Service areas and service levels

Standard Service Levels Wellington Region



	SERVICE LEVELS		
	CBD/INDUSTRIAL	URBAN	RURAL
Time to restore power	From 0 – 3 hours	From 0 – 3 hours	From 0 – 6 hours

Effective: 1 May 2005



safer together